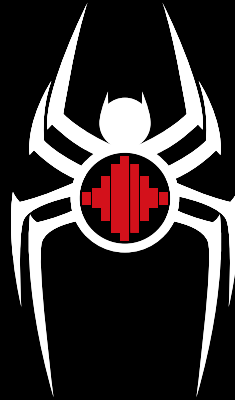


BLACKSPIDER
VENOMOUS CAR AUDIO

USER MANUAL



**BS100BT
CAR ALARM SYSTEM**



blackspideraudio



blackspideraudio



www.blackspider.co.za



Blackspider Audio

Congratulations on the purchase of your state-of-the-art “**BlackSpider**” vehicle security system.

Installation of this product by anyone other than an authorized dealer voids the warranty.

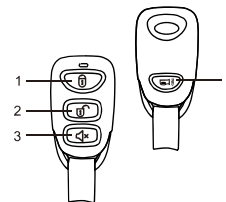
This owner’s guide should help you to get the most out of your system. Please take the time to read it prior to using the system.

User Manual for BS100-BT

Features:

- 12V Car Alarm
- Controlled by micro-processor system
- Two remotes with 4 buttons
- Up to 4 programmable remotes
- Frequency signal 433 MHZ (Impossible to be scanned)
- Remote Panic
- Car finder using remote
- Silent arming and disarming using the remote
- Boot release using remote
- One negative Aux output for optional modules
- LED indicator
- Auto arming (Programmable)
- Automatic auto arming (Accidental Disarming) (Programmable)
- Locks with auto arming (Programmable)
- Electronic siren with 120 Db
- Valet mode using reset button
- Anti-hijack by remote (Programmable)
- Anti-hijack by opening driver’s door (Optional)
- Anti-hijack by ignition(Programmable)
- Flashing of car lights when anti-hijack system is activated
- Exclusion of defective zones
- Function programming by software
- Manual disarming by a secure PIN code(Programmable)
- Last state memory

THE REMOTE:



Remote buttons functions:

With the ignition off:

Button 1: Arm the system + Car Finder.

Button 2: Disarm the system.

Button 4: Channel 2, to open the boot.

Buttons 1 and 2 pressed at the same time: Panic.

Buttons 3 and 4 pressed at the same time: Channel 3

Button 1 then button 2: Impact sensor off.

Button 3 then button 1: Silent arming.

Button 3 then button 2: Silent Disarming.

With the ignition ON:

Button 1: Lock the doors.

Button 2: Unlock the doors.

Button 3: Anti hijack.

Button 4: CHANNEL2 To open the boot.

Buttons 1 and 2 pressed at the same time: Panic.

Buttons 3 and 4 pressed at the same time: CHANNEL 3

Reset button:

- Cancel Auto arming if activated.
- Reset the Anti hijack by ignition mode.
- Activate Valet mode.
- Deactivate alarm when remotes are not working.
- To program new remotes.

LED Indicator:

The LED assists in notifying you about the 7 functions of the car alarm system.

Remote Functions:

Button 1:

Arm/lock the doors with the ignition off.

Press button 2 within the first 3 seconds after arming the system to turn impact sensor off.

With the ignition ON: press to lock doors.

Button 2:

Disarm/ unlock the doors with the ignition OFF.

With the ignition ON: Press to unlock doors.

Button 3: (Anti-Hijack)

Press to activate the Anti Hijack system.

Button 4: (Channel 2 / Channel 3)

Press it for 3 seconds and you will activate channel 2. This channel is used for opening the electronic boot.

Press the buttons 3 and 4 at the same time and you will activate Channel 3.

Buttons 1 and 2 simultaneously:

Press and hold the buttons 1 and 2 simultaneously for 3 seconds to activate the Panic.

Button 3 and then Button 1:(Silent arming)

With the ignition OFF:

Press button 3 and then button 1. The system will be armed in silent mode. The indicator lights will flash.

Button 3 and then Button 2:(Silent Disarming)

With the system armed:

Press button 3 once and then press button 2 once. The system will be disarmed in silent mode. The indicator lights will flash.

Buttons 3 and 4 simultaneously:

Press for 3 seconds to activate channel 3 to control an additional convenience option.

SECURITY CODES OF REMOTES:

- The system has two remotes.
- Each one has a unique code.
- You can program up to 4 remotes.

HOW TO ARM THE SYSTEM:

Arming the system with remote:

With the doors closed, press button 1 once to arm the system, while the ignition is OFF. The lights will flash and siren will sound once. The LED will blink slowly confirming that the system is armed.

Bypassing of defective areas:

Your system is equipped with circuitry that will exclude repetitive trigger sequences due to faulty door pin switches or environmental conditions such as thunder. When arming the alarm, and one zone is defective (For example, if the boot is not closed), the siren will sound 3 times and the lights will flash 3 times simultaneously indicating that one area is defective. When this happens the defective area will be excluded automatically and the car will be protected.

Bypassing the shock sensor with remote:

Press button 1 of the remote to arm, and within 3 seconds after arming it press button 2, the siren will sound once to confirm the exclusion of the shock sensor. This function is necessary when parked close to an area with high traffic or thunder. When you disarm the system, the shock sensor will reset.

Auto Arming (Programmable):

The system can also be programmed to arm itself automatically. If the system is programmed for auto arming, it will automatically arm after the ignition is turned off and the system "sees" you leave the vehicle by opening and closing a door. The lights will flash one time, the siren will sound one time and the LED will start to blink slowly, confirming the arming of the system. If the central locking system is connected and programmed the doors will lock.

If, within 30 seconds before arming, one door is opened, the auto arming will be on a wait mode. When the door is closed again the system will restart the auto arming mode.

NOTE: The system will auto arm and lock doors if selected. Please do not leave keys inside the car.

Alarm system Armed and Activated:

When the alarm system is armed, the LED will blink slowly. If a door is opened, the siren will start to sound and the lights will blink for 30 seconds, if the door is still open after 30 seconds, the siren will continue ringing with the lights flashing for 3 minutes, after 3 minutes the alarm system will exclude the door sensors and continue protecting the car with the other sensors. If the door is closed within the first 30 seconds after the sound of the siren, the siren will be silent and the lights will stop blinking 30 seconds after the door is closed.

When you disarm the system, the siren will sound 4 times and the lights will flash 4 times, this will indicate that the alarm was triggered and the LED will continue blinking until the ignition is switched on.

Disarming of the system:

When the system is armed, press button 2 of the remote once, the siren will sound 2 times and the lights will flash 2 times indicating that the system is disarmed. The immobilizer circuit (optional if connected) will be deactivated and the LED will be OFF. If the central locking system is connected the doors will be unlocked. If you press button 2, the system will send a signal to open the doors again.

Silent Arming:

First press button 3 once and then press button 2 of the remote to disarm in silent mode. If the alarm was triggered, after disarming the system in silent mode the siren will sound 3 times informing you that the alarm was triggered.

Automatic rearming after accidental disarming:

This function is programmed in the system memory like a preventative function. In this case, it is necessary to disarm the system using the remote and if you are not going to open the car or move the ignition switch to the ON position, the LED indicator will start to blink very fast, after 90 seconds the system will be armed again confirming with one sound of the siren and one flash of the lights. If the function 15 is programmed to the ON position the doors will be locked protecting the car again until you disarm the car.

Anti-Hijack by doors:

With the ACC on, if you open and then close the driver's door, the LED light will flash and the car lights will flash two times indicating the activation of the Anti-Hijack. If the sound is programmed, the siren will sound two times. For the anti-hijack function, you must connect the anti-hijack wire to a negative door switch.

Anti-Hijack by remote:

This function is used to activate the anti-hijack by pressing button 3 for three (3) seconds while the car is running, the lights will flash two times and the LED light will start to blink indicating the anti-hijack is activated. If the sound is programmed the siren will sound two times. This function is programmable (see programming table)

Anti-Hijack by ignition:

This function of the anti-hijack is automatically activated each time you turn the ignition switch from OFF to ON. It doesn't need a door to be opened or remote to be pressed.

When it is activated the LED starts to blink, the lights will flash two times and if the sound is programmed the siren will sound two times. This Function is programmable. (see programming table)

Anti-Hijack proximity sensor:

This function is used to activate the anti-hijack when the extra remote (see below how to program) is away from the car for more than 60 seconds when it is running. After 60 seconds the anti-hijack will be activated, the LED will start to blink, the lights will flash two times and if the sound is programmed the siren will sound twice. This Function is programmable. (See programming table).

- How to turn on the remote:

Press the button on the remote and hold it pressed, the red LED of the remote will flash once. After 3 seconds the LED of the remote will be on for 2 seconds. Release the button on the remote.

The remote will send one signal to the receptor every 6 seconds.

When the battery of the remote is depleted the red LED on the remote will start to blink. You need to replace the battery.

- How to turn off the remote:

Press the button of the remote and hold it, the red LED of the remote will flash once and then turn off. After 3 seconds, the LED of the remote will blink 5 times, then release the button of the remote.

Anti-hijack activated:

When the system goes into anti hijack mode, the lights of the car will flash 2 times, if function 13 is activated the siren will sound 2 times, the LED will start to blink slowly. After 30 seconds the lights start to blink and the siren will start to sound. After 15 seconds of the siren sounding, and if function 14 is programmed, the anti-hijack will be activated intermittently causing the car to slow down, then after 15 seconds the anti-hijack will be fully activated turning off the engine and locking the doors. The siren will sound continuously.

How to cancel the anti-hijack systems:

To cancel the anti-hijack system before the siren starts to sound or within 60 seconds after the activation, press and release the reset button one time. To cancel the anti-hijack after the siren starts or after the 60 seconds of the activation, move the ignition switch to the ON position, press the reset button the amount of times as the security code (default is 1 time) and wait 3 seconds, this 3 seconds is to confirm that the security code was entered correctly.

Valet mode and reset button:

You can prevent your security system from automatically arming and triggering by using Valet Mode. This is very useful when washing the vehicle or having it serviced. In Valet Mode, the security system will not arm, even with the remote, but all convenience functions (door locks, trunk release, etc.) will continue to work normally. To active the valet mode, you have to disarm the system and move the ignition switch to the ON position, then press and hold the reset button for 3 seconds. When this mode is activated the LED will be on all the time. When the valet mode is activated, the immobilizer circuit and the alarm system will be inactive; but you can still use the car finder, panic mode, boot opening, opening or closing of the doors, etc.

To exit the valet mode, you have to move the ignition switch to the ON position, and then press the reset button once. The LED will turn OFF indicating the deactivation of the valet mode.

Disarming of the system by the reset button:

If the battery on your remote is low, or if the remote is lost or faulty, you can disarm the system with the reset button.

FIRST: With the system armed, open the driver's door, the siren will start to sound.

SECOND: Move the ignition switch to the ON position, within 10 seconds press the reset button the amount of times as the security code (Factory default is one). The siren will continue to sound for 3 seconds and if the security code is correct, the system will be disarmed.

LED indicator:

The LED indicator is designed to bring information about the state of the alarm system to the car owner. Additionally, it can alert you if someone tried to steal the car. The LED should be installed in a place where the driver can see it easily.

The LED has 7 different modes:

- 1.LED off: Alarm is disarmed.
- 2.LED on: Alarm is on Valet mode.
- 3.LED blinking slowly: Alarm is armed.
- 4.LED blinking fast: 30 seconds- Automatic arming.
90 seconds- Automatic Re-Arming.
- 5.LED flashing 2 times with pause: The alarm was triggered due to an attempted theft by opening of the boot.
- 6.LED flashing 3 times with pause: The alarm was triggered due to an attempted theft by opening of the doors.
- 7.LED flashing 4 times with pause: The alarm was triggered due to an attempted theft by opening the bonnet.

Confirmation by siren and lights:

With the electronic siren and the lights of the car, the security system will indicate to you the different events associated with the protection of your car.

- One sound of the siren and flashing of the lights once, will tell you the system is armed.
- One sound of the siren within the first 3 seconds, after arming, will tell you the exclusion of the shock sensor.
- One sound of the siren after turning the ignition OFF, will tell you that the system is in valet mode.
- Two sounds of the siren and flashing of the lights twice, will tell you the alarm system is disarmed.
- Siren sounds loudly and the lights are blinking, the vehicle is being tempered with.
- Four sounds of the siren and flashing of the lights four times, after you disarm the system, the vehicle has been tempered with.

Shock sensor Alert:

The shock sensor is designed to tell you by way of the siren if the car got a low or hard impact. If the impact is low the siren will sound intermittently for 2 seconds and if the impact is hard the siren will sound for 30 seconds.

False alerts:

If the alarm is triggered, the siren will sound for a period of 30 seconds. If the siren sounds for more than 30 seconds, after 3 minutes the siren will turn off and the system will bypass the faulty zone, protecting the car with the rest of the sensors. This also applies to the shock sensor after 10 alerts.

Programming functions:

Up to 16 different functions can be programmed into memory.

How to program functions:

Entering the programming mode:

1. Switch ignition from ON to OFF position.
2. Within 7 seconds of switching to the OFF position, press and release the reset button 6 times.
3. The lights will be on and the siren will sound once indicating that you are now in the programming mode. You have 10 seconds to select the function that you want to program. If within 10 seconds you failed to program anything, the system will exit the programming mode.
4. Within 10 seconds, press and release the reset button corresponding to the number of the function that you want to program and the siren will beep indicating the same quantity of tones. For example, if you want to program the system with the automatic arming feature, press the reset button two times, and the siren will then beep twice.
5. To activate the function, press button 1 on the remote, the siren will sound once and the LED will light up. This process will confirm that the function is activated.
6. To deactivate the function, press button 2 of the remote, the siren will beep twice and the LED will switch OFF. You have 10 seconds to activate or deactivate the function. If you do not select an option, the system will exit the programming mode and the siren will beep 5 times to confirm this and the LED will switch off.
7. If you need to program other functions, repeat steps 4,5,6 to activate or deactivate other functions.
8. To exit the programming mode, wait 10 seconds or move the ignition switch to the ON position. The siren will beep 5 times and the LED will switch OFF.

PROGRAMMING FUNCTIONS

Function	Description	FACTORY DEFAULT	BUTTON 1	BUTTON 2
1	Automatic arming	OFF	ON	OFF
2	Lock the doors with automatic arming	OFF	ON	OFF
3	Lock the doors with ignition	ON	ON	OFF
4	Unlocking of doors with ignition	ON	ON	OFF
5	Automatic Re-Arming	ON	ON	OFF
6	Armed and disarmed with sound	ON	ON	OFF
7	Bypass faulty zones	OFF	ON	OFF
8	Anti-Hijack with remote	OFF	ON	OFF
9	Delay switches for courtesy light	OFF	ON	OFF
10	Anti-hijack with ignition switch	OFF	ON	OFF
11	Type of pulse for channel 3	A		See programming
12	Hooter intermittently	D		See programming
13	Activation of the anti-hijack with sound	OFF	ON	OFF
14	Stalling of engine at the second step of anti-hijack	OFF	ON	OFF
15	Doors lock with automatic re-arming	ON	ON	OFF
16	Anti-hijack proximity sensor	OFF	ON	OFF

Programming the pulse time of the central locking system:

The central locking factory default pulse is set to 0.8 seconds. This time can be extended to 4 seconds by cutting the jumper No.1.

Double pulse for central locking system:

The alarm comes programmed from the factory with the function of opening the central locking system with a double pulse. Press button 2 of the remote to disarm the alarm, the system will send the first pulse of opening, then press button 2 of the remote again and it will send a second pulse to open the central locking system.

Programming and functions of the Channel 3

Channel 3 of the alarm system is completely independent of channel 2, this was designed to be used to activate optional modules like auto engine start, electric windows, etc. To operate this function press buttons 3 and 4 of the remote simultaneously.

Channel 3 has three kinds of signals:

A. Pulse: Press buttons 3 and 4 of the remote simultaneously for 3 seconds to activate a pulse. If you hold the buttons pressed the pulse will change to 25 seconds or until you release the buttons.

B. Constant: Press the buttons 3 and 4 of the remote simultaneously for 3 seconds, you will obtain a constant pulse for channel 3, press and release buttons 3 and 4 simultaneously again and it will deactivate the pulse 3.

C. Permanent: Press the buttons 3 and 4 of the remote simultaneously for 3 seconds, and you will obtain a constant pulse of 30 seconds for channel 3.

The following can be selected in the programming mode for function 11.

Programming the Function for Channel 3:

- A. Pulse: Press button 1, the siren will sound once.
- B. Constant: Press button 2, the siren will sound twice.
- C. Permanent: Press button 3, the siren will sound 3 times.

Hooter Function:

The hooter can be programmed with 4 different functions but only one of them can be selected.

1. Dome Light: It will turn on the dome lights of the car when you disarm the alarm, and the dome light will blink intermittently when the siren sounds as a result of a panic or alarm being triggered.
2. Immobilizer: When arming the alarm, it holds a constant pulse that can be used for a second current cut or for additional active sensors.
3. Power windows: When arming the alarm, it will send a pulse of 30 seconds that can be used to activate an optional module for power windows.
4. Intermittent Hooter: The hooter will sound intermittently when the alarm is triggered and will give one sound when armed and 2 sounds when disarmed. It will also work with the output functions of the siren (Independent).

Programming the frequency of the hooter:

1. Dome Light: Press button 1, the siren sound once to confirm.
2. Current Cutter.....: Press button 2, the siren sound twice to confirm.
3. Power Window.....: Press button 3, the siren will sound three times to confirm.
4. Intermittent hooter.....: Press button 4, the siren will sound four times to confirm.

Programming a new remote and proximity remote:

The alarm is designed to memorize 4 different remotes.

PRECAUTION! When you program one remote, the rest of them will be erased from the memory, so please be sure to program all at the same time. The proximity remote must be the last one to be programmed.

Steps to follow when programming a remote:

1. Turn the ignition to the ON position.
2. Within the first 5 seconds of turning the ignition to the ON position, press and release the reset button 6 times. The siren will confirm with one loud sound, and you have 10 seconds to start programming the remotes. (If you do not start before the 10 seconds or turn the ignition switch to the OFF, the system will exit the programming mode, and the siren will sound twice to confirm and the memory of the remotes will not be erased).
3. Press and release button 1 of the remote to be programmed, the siren will sound once to confirm the programming of this remote, from this moment the old transmitters are erased.
4. If you desire to program a second remote, repeat step 3 and the siren will confirm with 2 sounds, 3 times when you program the third remote and after the fourth one, the system will close the programming mode.
5. Turn the ignition switch OFF or wait 10 seconds. The siren will beep two times indicating that the system is out of the remote learning mode.
6. If the anti-hijack by ignition is activated, first put the system into valet mode and follow the steps from the 1 to 5.
7. To program the additional remote for the anti-hijack by proximity mode, first program the alarm remotes. With the proximity remote off, press and release the button on the proximity remote, the system will confirm with many sounds the memorization of the proximity remote.

Security code:

Factory default for security code is 1

You can disarm the alarm and anti-hijack by the ignition and program the security code with the reset button.

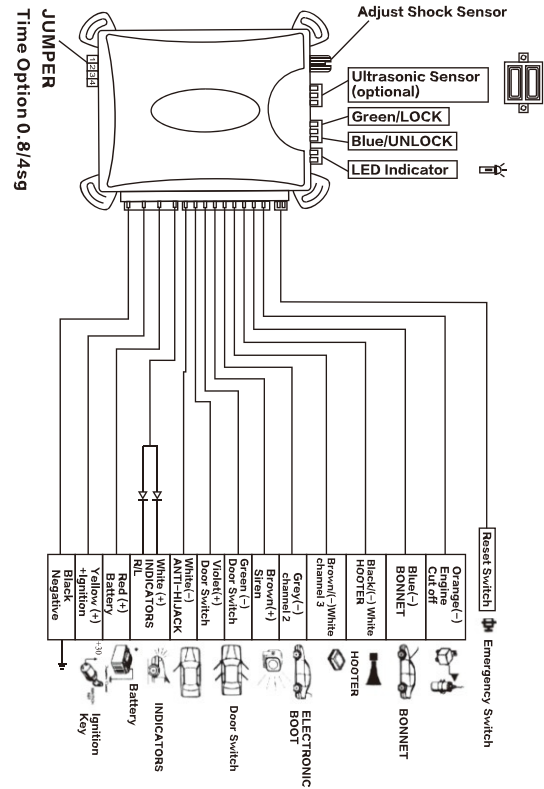
1. Turn the ignition switch from OFF to ON 3 times, and the third time leave the ignition switch at the OFF position. All this must to take less than 7 seconds.
2. The siren will sound once and the lights will be on, the system is now in the PIN code programming mode.
3. Press and release the reset button the same number of times as corresponds to the number of the PIN code that you select between 1 & 9. (Factory default code is 1)
4. The siren will beep the same number of times as the PIN code that is selected and then exit the programming mode.
5. Please store your PIN code as it will be required to disarm your alarm system in the case of an emergency, as well as, to deactivate the anti-hijack feature.

Identification of the installation wires:

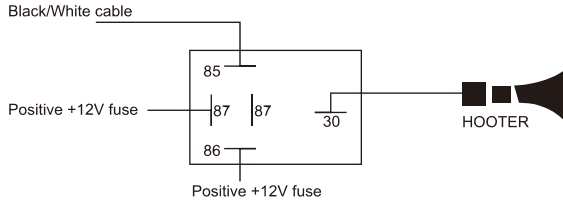
Orange	Negative output of 250 ma for the circuit cut
Blue	Negative switches for the boot and the bonnet
Black/White	Negative output of 250 ma for the relay output
Brown/White	Negative output of 250 ma for the hooter relay
Gray	Negative output of 250 ma for the relay of channel 2
Brown	Positive output for the electronic siren
Green	Negative door switches
Violet	Positive door switches
White	Negative driver door switch for the anti-hijack

White	Positive output for indicators
Red	12V Input
Yellow	Positive 12v from the ignition switch
Black	Main Negative input

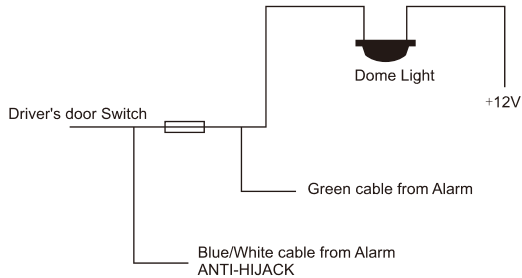
Green	Lock the doors
Blue	Unlock the doors



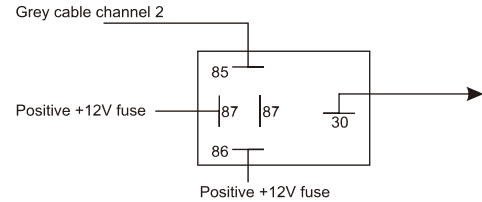
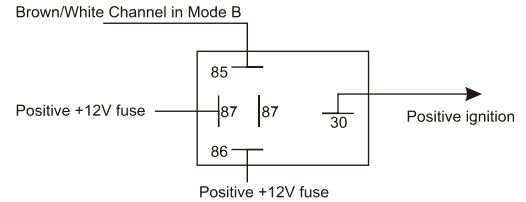
RELAY CONNECTION OF HOOTER



ANTI-HIJACK CONNECTION USING DRIVER'S DOOR



CONNECTION USING CHANNEL 3 IN MODE B AND CHANNEL 2

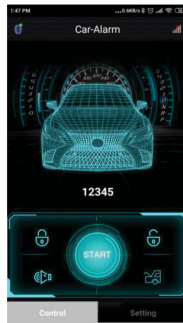


Please scan the QR Code below to download the Bluetooth APP.

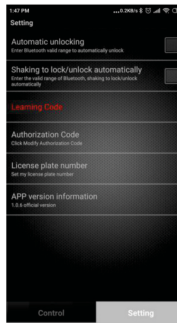


(IOS & ANDROID COMPATIBLE)

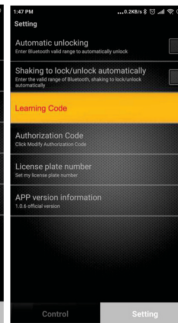
1. Scan the QR Code.
2. Download/Install the APP.
3. Open the APP.
4. Select "Settings"
5. Long Press "**Learning Code**"
6. Within 10 seconds press both "Lock" and "Unlock" buttons at the same time to successfully pair the alarm.
7. Once paired, return to the control page to Lock and Unlock your vehicle.



Picture 1



Picture 2



Picture 3